

## GRENOBLE



## GRÈS CÉRAME NON ÉMAILLÉ - R10 B



1 300 x 600 mm

9.5 mm

Rectifié Mate

**NOIR** • 1217H0536

**PERLE** • 1217H0538

**SABLE** • 1217H0539

**SILVER** • 1217H0537

Pqt. 1.08 m<sup>2</sup>

Poids 21.85 kg / m<sup>2</sup>



1 450 x 450 mm

9.5 mm

Rectifié Mate

**NOIR** • 1217H0540

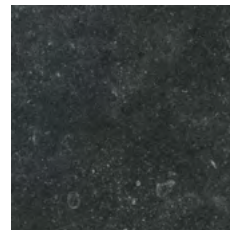
**PERLE** • 1217H0542

**SABLE** • 1217H0543

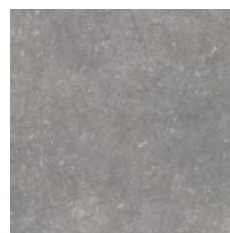
**SILVER** • 1217H0541

Pqt. 1.22 m<sup>2</sup>

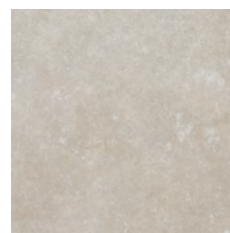
Poids 21.55 kg / m<sup>2</sup>



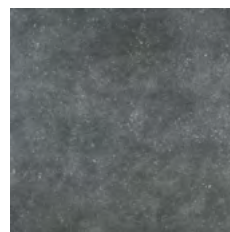
**NOIR**



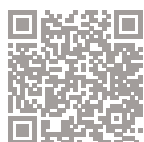
**PERLE**



**SABLE**



**SILVER**

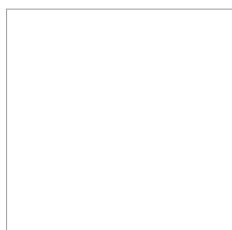


QR CODE INTERACTIF  
INFOS ET PRIX EN COURS

## GRENOBLE



## GRÈS CÉRAME NON ÉMAILLÉ - R10 B



1  600 x 600 mm

 9.5 mm

Rectifié Mate

**NOIR** • 1217H0544

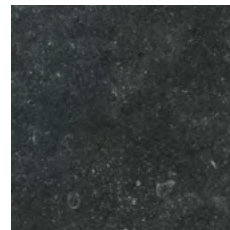
**PERLE** • 1217H0546

**SABLE** • 1217H0547

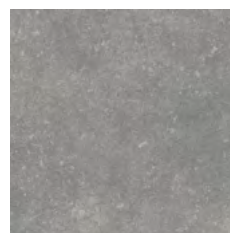
**SILVER** • 1217H0545

Pqt. 1.44 m<sup>2</sup>

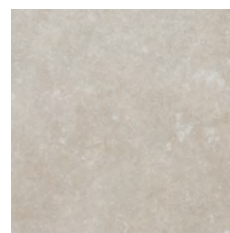
Poids 20.83 kg / m<sup>2</sup>



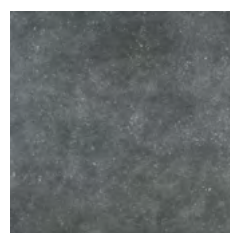
**NOIR**



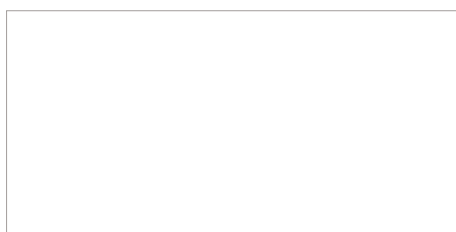
**PERLE**



**SABLE**



**SILVER**



1  600 x 1200 mm

 10.5 mm

Rectifié Mate

**NOIR** • 1217H0548

**PERLE** • 1217H0550

**SABLE** • 1217H0551

**SILVER** • 1217H0549

Pqt. 1.44 m<sup>2</sup>

Poids 23.95 kg / m<sup>2</sup>



QR CODE INTERACTIF  
INFOS ET PRIX EN COURS

